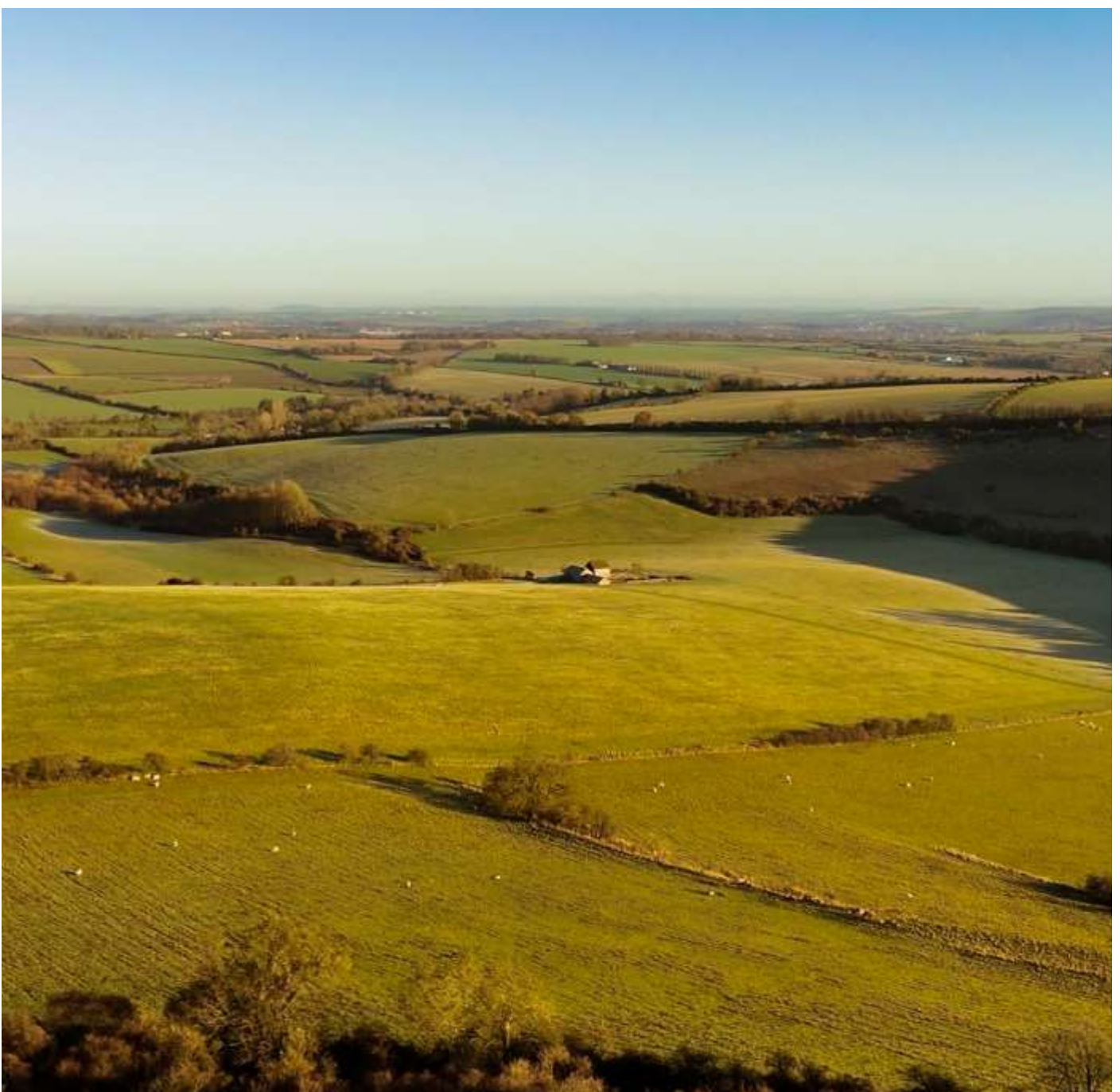




# Parish Magazine

March 2025



Throope from Faulston Hollow  
Photo by George King

STaB is published by the Parochial Church Council and delivered free of charge to every home in Stratford Tony and Bishopstone. We hope you find it interesting and informative. **Donations towards publication costs are always welcome.**

Donations should be made payable to Bishopstone Parochial Church Council and sent to: The Treasurer, Bishopstone PCC, Ebble Cottage, Mill Lane, Bishopstone, SP5 4BG. Please state on a cover note that it is for STaB.

The views in this magazine are not necessarily those of the PCC.

**Editor:** Kate Pendlenton: 780655

Email: **teamstab2019@gmail.com**

### **Advertising**

Robert Pendlenton: 780655

E.mail: **stabads@outlook.com**

Any articles for inclusion are to be submitted by 5pm on the 20th of the month to appear in the next issue - *unless the magazine is already full.*

The editors reserve the right to edit all contributions.

## **VILLAGE HALL SPRING FAYRE - SATURDAY 17th MAY at 10 a.m. PLANT STALL**

Springtime is coming, although it may not feel like it at the moment! Our Spring Fayre takes place on Saturday 17th May and will include a plant stall. This stall provides a wide variety of plants.

Please could you let us have any spare plants or seedlings of vegetables, herbs or any flowers. This provides a dual purpose of great value plants and generates an interest in gardening.

This year, could you give any donations of plants to me or bring them to the Village Hall on Friday 16th between 2 and 4 in the afternoon,

Thank you, Norman Barter.



### ***A warm welcome to Bishopstone and Stratford Tony...***

*Please let us know if you know of anyone who moves into Bishopstone or Stratford Tony - or indeed if you yourself have recently moved in, please do introduce yourselves! - so that we can offer them/you a welcome in STaB.*



## Hello from the Revd Canon Jenny Taylor



As I write this we are busy preparing for Lent – as you can see from our leaflet we have an action packed Lent this year! Do please join us at any or all the events but especially our Coffee Morning at Kirkhams on Saturday 22<sup>nd</sup> March as we raise funds for our Lent Project - the school in Cueibet, South Sudan. So often when we give to charity we wonder whether we really can make a difference – well with this one we certainly can as the school is relying on us completely. Our cash will enable those South Sudanese children to learn safely, comfortably and securely – what greater gift can we give to children?

But Lent of course is also about the development of our spiritual lives – however we may see that part of ourselves. There are so many opportunities in the Valley this Lent to deepen that part of ourselves that we often neglect as other things in our busy lives take precedence. I do so hope you find the time you need to make that deeper connection – have a look through our leaflet and hopefully at least one talk or service or walk or quiet time will fit into your schedule and you will find that blessed time just to be...as we read in Psalm 46: “Be still and know that I am God.”

<p><b>The Friends of Bishopstone Church</b></p> <p>If you would like to help the Friends of Bishopstone Church with their work of preserving the fabric of this beautiful building, please contact the Treasurer Norman Barter (01722 780471).</p>
--

<p><b>Chalke Valley Team Ministry - Parish of Bishopstone and Stratford Tony</b></p>
--

<p><b>Team Rector:</b> Ruth Howlett Shipley 01722 697022</p>
--

<p><b>Team Vicar responsible for Bishopstone and Stratford Tony:</b> The Revd Canon Jenny Taylor 01722 503081</p>
---

<p><b>Church Warden:</b> Sarah Seal 01722 780305</p>
--

<p><b>Lay Pastoral Assistant:</b> Sally Leaver 01722 780447</p>
---

<p><b>Team Administrator:</b> Emily Broomhead 07890 262376</p>
--

<p>thechalkevalleychurches@gmail.com</p>
--

## **Bishopstone Parish Council**

The next meeting of the Parish Council will take place in the Village Hall on **Thursday 13<sup>th</sup> March**. The meeting will be preceded by a meeting, **starting at 7.00pm**, to discuss the implications of the merger between the Sixpenny Handley and Chalke Valley GP practice and Sarum Health Group (see separate notice in this edition of STaB). The March meeting of the Parish Council will follow the conclusion of that meeting.

### **Whitlocks Development**

At the time of writing the planning application for the proposed development of the site between Whitlock Rise and Meadow View has yet to be submitted. It is now expected to be submitted at the end of February or in early March. When received by Wiltshire Council it has to be registered and then put out for public consultation. The consultation period is therefore likely to be in late March/early April. The Parish Council will call a Special Meeting, which all will be free to attend, specifically to discuss the submitted proposals and for the Council to determine what representations it wishes to make in response. The announcement of these arrangements will be made on the WhatsApp Network, on the village website ([www.bishopstone-salisbury.co.uk](http://www.bishopstone-salisbury.co.uk)) and in April's STaB - if the timing is later.

### **Speed Limit and other road improvements**

The local highways sub-group of the South West Wiltshire Area Board has provisionally approved for inclusion in its 2025/26 programme the projects for the reduction of the speed limit on Broadchalke Road from 40mph to 30mph and the upgrade of the "slow down" warning signs at the junction of Portfield Road and the High Road. However, resources for next year are limited and the Board has a large number of projects already approved for inclusion in the programme. Decisions have yet to be taken on priorities and which schemes will actually be implemented in this year.

*Mike Ash*  
*Clerk*



## Local Elections May 2025

Elections will take place on 1<sup>st</sup> May 2025 for our local Wiltshire Councillor and for all seven seats on Bishopstone Parish Council. Voting will take place in the Village Hall from 7.00am to 10.00pm.



Elections for the Parish Council will only take place if more than seven candidates are nominated. Existing Councillors have to seek re-election.

To be able to stand as a candidate at a parish council election you must be at least 18 years old and a British or Commonwealth citizen and either

- be an elector for the parish, or
- for the last 12 months have occupied land or premises in the parish, or
- work in the parish (principal or only place of work), or
- live within 3 miles of the parish boundary.

Nominations for both Wiltshire Council and Bishopstone Parish Council will need to be submitted to Wiltshire Council's Electoral Services in Bourne Hill, Salisbury between the hours of 10.00am and 4.00pm, Wednesday 12 March 2025 to Thursday 2nd April 2025.

Information for candidates is available on the Wiltshire Council website at: <https://www.wiltshire.gov.uk/local-elections-candidates>. Nomination papers can be downloaded from the Electoral Commission website at: <https://www.electoralcommission.org.uk/guidance-candidates-parish-council-elections-england/resources-candidates-parish-council-elections-england>.

Nomination papers are also available by contacting the Parish Clerk (Mike Ash) at [bishopstoneclerk@btinternet.com](mailto:bishopstoneclerk@btinternet.com).

If you wish to vote in these elections, but are unable to attend the Village Hall, it will be necessary for you to make arrangements for a postal vote. The deadline for applying for a postal vote is 14<sup>th</sup> April 2025.

## Sixpenny Handley and Chalke Valley Practice

### PROPOSED MERGER BETWEEN THE SIXPENNY HANDLEY AND CHALKE VALLEY PRACTICE AND SARUM HEALTH GROUP

Those registered with the Sixpenny Handley and Chalke Valley GP practice have been informed that a **“patient participation” meeting is to be held on Wednesday 12th March at 6.00pm** to discuss the merger between the Practice and Sarum Health Group. This meeting will be “on-line” using Microsoft Teams. The link for this meeting will be:

<https://tinyurl.com/SixPennySarumHealthGroupMerger>.

The Parish Council registered concerns about this arrangement as many of those directly affected by these changes will not have access to on-line services or familiarity with applications such as Microsoft Teams. It was also made clear that many Bishopstone residents want to have the opportunity to directly question those involved given longstanding concerns about the adequacy of the GP services available in the Chalke Valley and, in particular, as regards the future of the Broad Chalke surgery.

Both practices are keen that as many people as possible go online to learn about the proposed changes on 12<sup>th</sup> March. However, for those unable to access the online event it has been agreed that **an additional briefing meeting will be held in Bishopstone Village Hall on Thursday 13<sup>th</sup> March at 7.00pm**. This will be immediately before the March meeting of the Parish Council. The format for the meetings will be broadly the same – a video presentation of the proposals followed by a question and answer session. One of the practice partners will attend the village hall meeting for this purpose. I understand that a key message of the presentation will be to set out positive proposals for the future of the Broad Chalke surgery.

Mike Ash

Clerk

Bishopstone Parish Council

# PARISH COUNCIL ELECTION

An election takes place in May (see separate notice) for the seven seats on Bishopstone Parish Council. Not all existing Parish Councillors are standing again, **so there are vacancies to be filled.**



No previous experience is necessary to be a Parish Councillor and the role does not involve a great time commitment. However, it does present an opportunity for you to help look after our village, improve its amenities and services and deal with local issues that affect us all. In the past year the Parish Council has:

- secured the agreement of Wiltshire Council to the lowering of the speed limit on the main road through the village;
- planted a Community Orchard for all to enjoy;
- liaised with the Police regarding anti-social behaviour;
- obtained agreement to the improvement of safety at the junction of Portfield Road and the High Road;
- taken action to avoid flooding, to get gullies emptied and potholes repaired;
- begun arrangements for promoting more out of school activities in the village for young people;
- provided comments on numerous planning applications in the village and is taking a lead on the proposed "Whitlocks" development.

If you think you could contribute, but need to know more about what is involved, contact the Parish Clerk, Mike Ash, on 01722 781044 or by emailing [bishopstoneclerk@btinternet.com](mailto:bishopstoneclerk@btinternet.com).

## Village Hall



## March 2025

### The BISHOPSTONE COMMUNITY CAFÉ

The Village Hall Café is normally open on alternate **Thursdays** throughout the year.

Dates for late winter and spring are: **Thursdays** the **13<sup>th</sup>** and **27<sup>th</sup>** of **March** and the **10<sup>th</sup>** and **24<sup>th</sup>** of **April**. **10.30am** until **12.00noon**.

Everyone is welcome to look in for a coffee and chat. There is presently no charge for refreshments.

### MOVIOLA at Bishopstone

**Friday 28<sup>th</sup> March 2025**

The BAFTA winning film for **March** will be “**Conclave**” *Cardinal Lawrence has charge of one of the world's most secretive and ancient events, participating in the selection of a new pope. He soon uncovers a trail of deep secrets that could shake the very foundation of the Roman Catholic Church. Based on the book by Robert Harris and starring Ralph Fiennes, Stanley Tucci, John Lithgow and Isabella Rossellini.*

Doors open at **7.00pm** and the film will begin at **7.30pm**.

Entry for the film is **£7.00**. A cash bar with ices and snacks will be available.

If possible, please book in advance with Caroline Ash on (01722) 781044, Nigel Peasley on 07761 463737 or Sue Taylor on 01722 780316.

A trailer for the film can be seen in the Events section of the village website at [www.bishopstone-salisbury.co.uk](http://www.bishopstone-salisbury.co.uk). The film on **April 25<sup>th</sup>** will be “**Paddington in Peru**”

### BISHOPSTONE COMMUNITY LUNCHES

The **March** lunch will be on **Wednesday 5<sup>th</sup>** and the speaker will be Linda Nunn from Cranbourne Chase National Landscapes.

Times as usual: **12.00 noon** for **12.30 pm**. Advance booking is essential.

Please telephone Caroline Ash on (01722) 781044 and advise her of any dietary requirements. The cost is **£8.50** and includes a drink.

The last lunch of the season will be on **Wednesday 9<sup>th</sup> April** when the speaker will be from Wilton Men’s shed. Monthly community lunches will resume in October.



## **ANNUAL GENERAL MEETING**

The Village Hall Annual General Meeting will be held on **Monday 12<sup>th</sup> May** at **7.00** for **7.30pm**. All welcome.

## **ANNUAL SPRING FAYRE**

The ever-popular Spring Fayre will be held on **Saturday 17<sup>th</sup> May** from **10.00am** with all the usual attractions. The plant stall will be a key feature and Norman will very much appreciate donations of spare plants, seedlings of vegetables or flowers. The hall will be open the day before to receive them. More details nearer the event.

## **BOOKINGS FOR SOCIAL EVENTS AND WORKSHOPS**

Both halls are available for hire. To enquire or make a booking, please contact the bookings secretary Margaret Barter (01722) 780471

## **BISHOPSTONE PLAYGROUP**

The playgroup meets on Friday mornings during term time from 9.30 – 11.00 am. Breastfeeding support is available from qualified breastfeeding counsellor Cally Edwards and trained peer supporters. Find further information on our Facebook page *Bishopstone Playgroup* or contact Cally [callyedwards@me.com](mailto:callyedwards@me.com) or 07968 797 168.

## **“EXTEND” EXERCISE CLASSES**

For further information about these exercise classes contact Jenny on 01722 780863, email: [jennyberwynjones@yahoo.co.uk](mailto:jennyberwynjones@yahoo.co.uk)

## **PILATES AT BISHOPSTONE**

For further information contact Claudine on 07788 587937 or email: [claudineblake@aol.com](mailto:claudineblake@aol.com)

## **YOGA WITH HANNAH**

For more details please contact Hannah Stocker at 0773 856 1888 or by email: [yoga\\_with\\_hannah@outlook.com](mailto:yoga_with_hannah@outlook.com).

## **VILLAGE CRAFT GROUP**

The Village Craft Group meets on the first Tuesday of the month from 7 – 9pm. Any crafters are welcome. For further details please contact Sue Porter on 01722 780459 or Jacqueline James on 01722 335866.

## **ART GROUP**

An Art Group led by Russell Bignold meets every Thursday morning between 9.45am and 11.45am. Drawing, painting and sculpture (clay) are taught, covering all genres. Cost £20 per session, tea and biscuits provided.

Contact Russell at [russellbignold@btinternet.com](mailto:russellbignold@btinternet.com). Website [www.russellbignoldartist.com](http://www.russellbignoldartist.com).

## **Bishopstone Village Hall rates for private hire**

Bishopstone Village Hall has 2 rooms that are available for hire for a wide range of functions. The larger room is ideal for children's parties with lots of space for running around. It can also accommodate wedding receptions, charity functions and large family celebrations.

The smaller room (The Memorial Room) is a good size for meetings and smaller gatherings.

The modern kitchen is spacious and fully equipped with an electric catering range, a professional 4 minute dishwasher, water boiler, hot cupboard, microwave oven, 2 fridges and a freezer, all suitable for professional caterers. There is also glassware, crockery and cutlery for over 80 people.

The hire charges include use of heating and electricity.

### **The rates are currently:**

	<b>Villagers</b>	<b>Non Villagers</b>
Hire of both rooms (With full use of the kitchen)	<b>£15 per hour</b>	<b>£20 per hour</b>
Hire of both rooms (With tea making facilities but no other electrical kitchen equipment)	<b>£10 per hour</b>	<b>£15 per hour</b>
Full use of the kitchen <u>only</u>	<b>£10 per hour</b>	<b>£15 per hour</b>
Weddings – per event/day	<b>£150</b>	<b>£250</b>
Parties – per event/day	<b>£100</b>	<b>£150</b>

### **Broadband**

An additional charge is made for use of the broadband connection of £6 per hour with a maximum of £25 per day.

### **Large projection screen**

Use of this professional quality screen is charged at an additional £10 per event.

The hire period must include time to set up and clear away after the event.

**For further information and bookings contact: Margaret Barter 01722 780471**



**Lay Pastoral Assistants** (LPAs) are trained and authorised by the church to visit and or offer pastoral care to anyone in our parishes. Whether you are sick, recently bereaved, new to the area, or know someone who might like a visit from the church community, please contact the clergy (details on the Benefice services page) and we will ask one of our excellent LPAs to get in touch.

If you might be interested in exploring this ministry yourself and would like to find out more, do get in touch with Maggie on [revmaggie@gmail.com](mailto:revmaggie@gmail.com) or have a chat with any of the team.



### **Chalke Valley Pilgrimage Friday 28<sup>th</sup> and Saturday 29<sup>th</sup> March 2025**

To celebrate Mothering Sunday weekend, a pilgrimage is being organised to walk through the Chalke Valley from Berwick St John to Salisbury Cathedral. It is open to everyone in the Chalke Valley. A pilgrimage invites each of us to step outside our daily life and enter a space of reflection, discovery and transformation. It is not a competition, nor an organised group walk!

**Day One (Fri 28 Mar)** will be from Berwick St John to Coombe Bissett (approx. 20 kms), calling at the churches in between. There will be an optional overnight stay at Coombe Bissett Village Hall on Friday night.

**Day Two (Sat 29 Mar)** will be from Coombe Bissett to Salisbury Cathedral, via the east end of the Chalke Valley (approx. 20 kms). The intention is to arrive at Salisbury Cathedral in time for Choral Evensong at 5.30pm for those that wish to attend.

Come and join us - whether for the whole journey, one day, for an hour or two or just to meet the pilgrims as they pass through the route. We hope to walk via most churches along the valley, enjoying refreshments en route.

If you are unable to walk but would like to support this event, we really need volunteers to welcome pilgrims along their way, provide refreshments or transporting weary pilgrims back to their cars etc.

If you are interested in taking part in the pilgrimage in any way, please contact Ruth Howlett-Shipleigh on 01722 697022 or by email: [revdruth@outlook.com](mailto:revdruth@outlook.com) to receive more information.

**Do Come and Join Us!**

## Church Electoral Roll

### ST JOHN THE BAPTIST CHURCH, BISHOPSTONE



This year the Church Electoral Roll needs to be renewed, which happens every 6 years. The Roll is used to determine eligibility for attendance and participation at the Annual Parochial Church Meetings, and for election to the parochial church council (PCC). If you would be happy to remain on the Roll please could you fill in an application form. For those who may like to be on the Church Electoral Roll, please could you fill in the form, either copied from STaB (on the following page), or there are forms available in the church.

If you would like any more information, or to be added to the Roll please contact me –

Anne Stutchbury

[annewheelwright@gmail.com](mailto:annewheelwright@gmail.com)

**APPLICATION FOR ENROLMENT ON THE CHURCH  
ELECTORAL ROLL OF THE PARISH OF:  
Bishopstone and Stratford Tony**



Full name .....

Full Address .....

..... Postcode .....

I declare that

1. I am baptized and am aged 16 or over, (or, become 16\* on .....) )
2. (Tick one only of boxes 2A, B or C)

**A** I am a member of the Church of England (or of a Church in communion with the Church of England) and am resident in the parish.

Or

**B** I am a member of the Church of England (or of a Church in communion with the Church of England) and, not being resident in the parish, I have habitually attended public worship in the parish during the period of six months prior to enrolment.

Or

**C** I am a member in good standing of a Church (not in communion with the Church of England) which subscribes to the doctrine of the Holy Trinity and also declare myself to be a member of the Church of England and I have habitually attended public worship in the parish during the period of six months prior to enrolment.

I declare that the above answers are true and I apply for inclusion on the Church Electoral Roll of the parish.

Signed ..... Date .....

\* Those who become 16 during the next 12 months may complete the form, and become eligible to be entered on the Roll on their sixteenth birthday.

**Notes**

1. The only Churches at present in communion with the Church of England are other Anglican Churches and certain foreign Churches.
2. Membership of the electoral roll is also open to members in good standing of a Church not in communion with the Church of England which subscribes to the doctrine of the Holy Trinity where those members are also prepared to declare themselves to be members of the Church of England.
3. Every six years a new roll is prepared and those on the previous roll are informed so that they can re-apply. If you are not resident in the parish but were on the roll as an habitual worshipper and have been prevented by sickness or absence or other essential reason from worshipping for the past six months, you may write "would" before "have habitually attended" on the form and add " but was prevented from doing so because ....." and then state the reason.
4. If you have any problems over this form, please approach the clergy or lay people responsible for the parish, who will be pleased to help you.
5. In this form "parish" means ecclesiastical parish.

**Additional information** *(This is not part of the statutory application form)* **Consent Form**

By signing this section of the form you agree that the contact information you provide may also be used to keep you informed about news, events, activities and services in the parish, for example by your Parish Priest. Your personal data will not be used for any other purpose without your explicit consent.

Email address:

Telephone number:

Signed:

*You may withdraw your consent at any time by contacting The Revd Canon Jenny Taylor - 01722 503081*





## **Upcoming Events**

**New Set Menu**

**2 x Courses £18**

**Available Tue – Sat Lunch & Evening**

**Valentines Day 14<sup>th</sup> Feb**

**Fish Evening Set Menu**

**Wed 19<sup>th</sup> Feb**

**Six Nations Rugby**

**Starts 30<sup>th</sup> January**

**All Games Live**

**Book Now**

**01722 780244**

## Friends of Bishopstone Church

(The Parish Church of St John the Baptist, Bishopstone)



The Friends organised a successful Antiques Evening in the Village Hall in February to help raise money for the North Transept roof repair. The Head of Valuations, Jeremy Lamond, at Woolley and Wallis gave an enlightening talk on his passion for Asian ceramics, showing us some of his collection. He then went on to discuss the family heirlooms that people had brought in. There were some fascinating objects ranging from a Butler's tea set to a tapestry. A Chinese porcelain bowl, called a Klapmuts bowl caught his eye and he was delighted that the owner had 7 more at home!



The event raised £688.05, and the committee worked very hard in arranging such an interesting evening.

In the summer we are planning Open Gardens in Bishopstone on **Sunday 6<sup>th</sup> July**. We have chosen gardens in the west side of the village to enable visitors to walk to each one, and to avoid driving. More details about the event will appear in future issues of STaB.

Anne Stutchbury  
Chairman The Friends of Bishopstone Church

Committee: Margaret Barter, Norman Barter, Richard Brett, George Brutton, Tony Clarke, Jilly Ford, Sarah Seal, Alan Stutchbury

## Chalke Valley Community Support

### POLICE

**Call 999 in an emergency:** an emergency is when someone is being threatened or at risk of getting injured, or a crime is in progress.

**Call 101 for non-emergencies:** such as reporting a crime that has already taken place, non-urgent incident, contacting local officers etc

To contact your Community Policing Team about a community-related matter, such as a school visit, then please email [SalisburyAreaCPT@wiltshire.police.uk](mailto:SalisburyAreaCPT@wiltshire.police.uk)

Please note that this mailbox is not monitored 24/7.

You are unable to report crimes of any type via email and please do not report any situations that require an urgent response.

#### You can follow us on:

Facebook - [www.facebook.com/salisburypolice](http://www.facebook.com/salisburypolice)

Twitter - [www.twitter.com/SouthWiltsCPT](http://www.twitter.com/SouthWiltsCPT)

Community Messaging: Sign up to Community Messaging for news and updates from your local policing team: [www.wiltsmessaging.co.uk](http://www.wiltsmessaging.co.uk)

### Sixpenny Handley and Chalke Valley Practice

Doves Meadow Surgery, Broad Chalke: 01722 780282

**Broadchalke Surgery is open on Tuesdays and Thursdays**

Sixpenny Handley Surgery: 01725 552500

[www.sixpennydocs.co.uk](http://www.sixpennydocs.co.uk)



### MOBILE LIBRARY

The Mobile Library will be calling at The Styles in Bishopstone between 1115-1135 on the following Thursdays:

13 March, 10 April, 8 May, 5 June, 3 July



**Coombe  
Bissett  
Stores**

[www.coombebissettstores.co.uk](http://www.coombebissettstores.co.uk)

[shop@coombebissettstores.co.uk](mailto:shop@coombebissettstores.co.uk) Tel: 01722 718852

**OPENING HOURS, SHOP AND POST OFFICE**

Mon-Fri: 7am-6pm, Sat: 7am-1pm

**Chalke  
Valley  
Stores  
Broadchalke**

w: [www.chalkevalleystores.co.uk](http://www.chalkevalleystores.co.uk)

e: [info@chalkevalleystores.co.uk](mailto:info@chalkevalleystores.co.uk) Tel: 01722 780998

**OPENING HOURS**

Shop: Weekdays 9am - 5pm (until 4pm on Saturdays)

Post Office: Monday, Tuesday & Thursday 9:30am- 1:30pm

## CHALKE VALLEY LINK SCHEME

**This scheme exists to provide transport and other good neighbour support in a local, personal and friendly way to members of the Chalke Valley community who need it.**

If you live between Bishopstone and Bodenham or Britford and need help getting to your surgery/hospital appointments/local shopping or to visit family members in hospital, **please phone 01722 718780 to reach our Joint Transport Coordinators (Anna Mynott, Debby Underhill or Roger Brown) who will be on duty in rotation.**

There is no charge, but you are invited to make a donation towards our administrative costs. Our co-ordinators are all volunteers and there may be occasions when you will be asked to leave a message which will be answered as soon as possible. Our drivers are all volunteers too, so please give us as much notice as possible so that we may find a volunteer who is available.

We are always looking for Volunteer Drivers to enable us to continue to provide a useful service for our community. If you feel you can help - you won't be committed to any particular date or time, only when you are free - please contact any of the above for further information.

Registered Charity No 1076335

Queen's Award for Voluntary Service

### Staying in Touch

STaB magazine is a vital source of communication in the village, keeping everyone informed as to what is happening locally. However, the Covid-19 pandemic has highlighted the fact that situations can change very rapidly. To keep up to date with what is going on there are two other important sources of information in Bishopstone - the village website and our own WhatsApp network.

The village website – [www.bishopstone-salisbury.co.uk](http://www.bishopstone-salisbury.co.uk) is updated in real time and carries all the latest news on issues that affect the village.



The Bishopstone Network is a WhatsApp messaging service that has more than proved its worth during the pandemic, and more recently during the storms when residents were able to report fallen trees and blocked roads to the Emergency Planning Officer. Information can be instantly shared to your mobile phone about support services being provided in the village and on a variety of other matters – everything from the length of electricity black-outs to what is available from the White Hart take-away service! You will need to download the App to your phone and then contact Piers Edwards ([piersgedwards@gmail.com](mailto:piersgedwards@gmail.com) or 07920 475009) or Kate Pendlenton ([kmpendlenton@hotmail.com](mailto:kmpendlenton@hotmail.com) or 07769202200) and ask to be added to the group.



**CHALKE VALLEY**

**SPORTS CENTRE**

*sport for all*

**Facilities for all the Chalke Valley**

**SPORTS SCENE**

**MARCH 2025**

**RACE NIGHT FUNDRAISER-** This took place last month. It was our first Race Night, and it was a sell-out with 70 people enjoying the racing, bar, supper and a fantastic raffle, with many prizes donated locally. The evening raised nearly £2,000. These funds will help complete the kitchen refit and help towards the grant raising efforts on other projects. We hope this will become a regular feature early each year in our fundraising calendar. If you would like to help organise fundraising events, please do get in touch with one of the Committee.

At the time of writing, we are also about to host another **Star Gazing Evening on 28 February** with The Friends of Broad Chalke School. This is another initiative that we hope can feature annually in our calendar.

**Sports Centre Management** – The Centre is managed by a small committee of volunteers. Over the coming months, the Committee, along with other facilities in Broad Chalke, together with Broad Chalke Parish Council, will be having discussions about the future of our community facilities. Simply put, some facilities may have to close as the pool of volunteers that runs them gets smaller and smaller. If you feel you might have a few hours that you could give to help keep facilities open, please get in touch with one of the committee or a committee member of the Village Hall.

**Maintenance** - At the Sports Centre, the first major change to arrangements is the likely outsourcing of the sports field maintenance. Nigel has undertaken this task for many years and would continue but for the costs of buying and maintaining suitable equipment to do so! The Committee have looked at options and, at the time of writing, are investigating joint arrangements using Broad Chalke School's external maintenance contractor and/or with Bishopstone Parish Council, as they are in a similar position, needing to find a new way to maintain their Recreation Field. If this comes about, we hope that the partnership approach will secure some economies of scale. However, moving from a largely voluntary arrangement to a commercial one is not likely to come without cost implications!

**Chalke Valley Fete and Produce Show** – This takes place at the Sports Centre on Saturday 16 August 2025 from 1.00pm-4.00pm.

**The hall is available for private hire** so if you have a family celebration in the coming weeks, why not see what we can offer?

All our sports activities are promoted through the website, see below.

General e.mail: [info@chalkevalleysportscentre.co.uk](mailto:info@chalkevalleysportscentre.co.uk)

More details can be found on our website: [www.chalkevalleysportscentre.co.uk](http://www.chalkevalleysportscentre.co.uk)



## Salisbury Foodbank

February has been a very lean month for the Foodbank and we, like many others, have only managed 2 kgs of food. Please, if you are able, make a donation.

Very hard times are with us again... cold weather and an increase in electricity charges add to people's misery making it even more difficult to make the pounds stretch. Please give generously.

They are particularly short of:-

Long life fruit juice

Long life milk

Tinned veg

Meat/veggie Meals (tinned curry, chilli, ham)

Tinned fruit

Packet and sponge puddings

Shampoo/Conditioner/2 in 1

Baby products

Toilet rolls

Biscuits



They have plenty of Pasta but need more food.

Also please make sure any donations are within date.

Thank you in advance for your support.

Judy Barrett

Please leave donations either in the box in the Church or by my front door, at the Old Post Office, The Cross, Croucheston, or phone me on 01722 780306 if you would like me to collect.



**Shop at the heart of the Community  
Owned by YOU, Run by YOU, Here for YOU.**

w: [www.chalkevalleystores.co.uk](http://www.chalkevalleystores.co.uk) | e: [info@chalkevalleystores.co.uk](mailto:info@chalkevalleystores.co.uk) | Tel: 01722 780998

### **OPENING HOURS**

**Shop:** Weekdays 9.00am - 5pm (until 1pm on Saturdays)

**Coffee Shop:** Weekdays 10am - 3.30pm (until Midday 12pm on Saturdays)

**Post Office:** Monday, Tuesday & Thursday 9.30am to 1pm

**Home deliveries:** If you need a delivery, please call the Shop on **01722 780998**.

On February 14<sup>th</sup>, a ceremony was held at the Hub at which the King's Award for Voluntary Service was presented by Dame Sarah Rose Troughton DCVO, the current Lord Lieutenant of Wiltshire to Derek Brown on behalf of Chalke Valley Community Hub Limited and its team of volunteers.



All volunteers were invited to join the celebrations and many were able to attend which was very nice to see as the award would not have been possible without their hard work and commitment. We were also lucky enough to have Sven Hocking, the Mayor of Salisbury, John Glen MP and Dr Olivia Chapple, OBE, the High Sheriff of Wiltshire at the event. John Glen MP spoke and proposed a toast to all the volunteers, and flowers were presented to Susie Hatt-Cook who recently stood down as a volunteer having supported the Hub in that role since day one.

**On another subject, for those of you who are members of Chalke Valley Community Hub Limited, our Annual General Meeting is being held at the Hub on Tuesday 4<sup>th</sup> March at 7.30pm. Please come along if you would like to.**

***NB There is a Trussell Trust Collection Point in the Hub for any donations of foodstuffs you may wish to make. Your generosity will help those most in need.***

## Ramblings with Jazzie

It is wonderful to see the sun again after all that cold, wind and frost, especially as it feels warm now! Jazzie was not very impressed by the frost .. her tootsies got cold, so walkies were not popular!

Nonetheless, we managed some good walks, although not very far over the fields and went to see the horses, despite the very boggy conditions. It gets very muddy on these walks, but she seems to like to see the horses, and loves running loose in the empty fields.



The village looks to be in very good order now, with all the hedges so well trimmed, and the river so high and fast cleaning the bed. Of course, we down in The Croft have very well contained hedges, as is the norm here! We now need to do some mowing of front lawns, as some of these are rather straggly!



No sign of the hedgehogs for some weeks now, but I presume they are hibernating or sleeping. Whether they are using our hutches, I am not sure, as there are so many other leafy spots suitable for overwintering. We keep water available for them, and sometimes put out a little cat kibble. On the other hand the wood pigeons remain as busy as ever chasing each other around. I think they take turns in being 'boy' and 'girl', or they do not know the difference! The smaller birds are gobbling up the seed and nuts and fat-balls in the feeders, and look very busy pairing off too.

The garden also keeps us busy, while Jazzie watches and inspects the work, while we are clearing and preparing the beds and the greenhouse. We will try tomatoes again, but last year they all got blight. The fields are now showing green, so spring must be in the air.

The antiques evening in the Village Hall was a great success, with plenty to see and excellent commentary by the valuer. The aim was to raise funds for the expensive repairs to the north wall and roof of the north aisle in our church. Sarah has now provided a most informative board in the crossing, showing the planned work and the damage. It appears the roof remains in place through much faith and solid medieval beams! We look forward to more fund raising events this year. Please give them all your support, as the church is the vital heart of the village, and must be kept alive and well.



Out now for another stroll with Jazzie, and sure to meet some friends on this lovely day (19<sup>th</sup> Feb). See you soon and keep walking!

*James Thompson*



# MEDITATION

A Meditation Hour is held every 2<sup>nd</sup> Wednesday of the month at Lodge Farmhouse, Broad Chalke, at 2.30pm



We have a short, introductory talk followed by 30 mins. of silence (with tea and chat afterwards if you would like to stay on).

Contact: Janet Roe: 01725 519242 [jhroe99@gmail.com](mailto:jhroe99@gmail.com)

## Dates for 2025

Jan 8<sup>th</sup> Feb 12<sup>th</sup> March 12<sup>th</sup> April 9<sup>th</sup>  
May 14<sup>th</sup> June 11<sup>th</sup> July 9<sup>th</sup> August 13<sup>th</sup>  
Sept 10<sup>th</sup> Oct 8<sup>th</sup> Nov 12<sup>th</sup> Dec 10<sup>th</sup>

# QUIET DAYS

March 12<sup>th</sup>, 19<sup>th</sup>, April 2<sup>nd</sup>, 9<sup>th</sup>

10am - 4pm

(You are welcome to drop in just for the odd hour)



at Lodge Farmhouse (SP56 SLU). There will be materials to use and refreshments available, but if staying all day, please bring a packed lunch.

# AFTERNOON TEA

SUNDAY 16<sup>th</sup> MARCH

2.30 - 5pm

at

LODGE FARMHOUSE  
BROAD CHALKE



In aid of the Benefice Lent Project

ENTRANCE: by donation





Registered charity no 1123314



FONTHILL ESTATE

Supporting Salisbury Hospice Charity



## Fonthill House Open Garden

An opportunity to wander among the formal gardens of Fonthill Estate including the ornamental kitchen gardens and wistful woods.

**Delicious Food & Drink** ✦ **Artisan Stalls** ✦ **Raffle** ✦ **And Much More**



Sunday 27th April | 12 noon to 5 pm

Advanced Tickets: £10 | On the Gate: £12

Free Entry for Children Under 12 years



[www.salisburyhospicecharity.org.uk](http://www.salisburyhospicecharity.org.uk)



# Emoji Code Breaking

									
5	2	7	3	4	9	6	8	0	1

$$\text{Smiling Face with Smiling Eyes} + \text{Smiling Face with Heart Eyes} + \text{Crying Face} + \text{Mouse} = 97$$

- $$\text{Grinning Face with Big Eyes} + \text{Mouse} + \text{Smiling Face with Heart Eyes} + \text{Thinking Face} =$$
- $$\text{Woman with Open Mouth} + \text{Thinking Face} - \text{Smiling Face with Smiling Eyes} + \text{Crying Face} =$$
- $$\text{Squirrel} + \text{Smiling Face with Heart Eyes} - \text{Blue Face with Sweat Droplets} + \text{Crying Face} =$$
- $$\text{Smiling Face with Heart Eyes} + \text{Smiling Face with Smiling Eyes} + \text{Thinking Face} + \text{Woman with Open Mouth} =$$
- $$\text{Mouse} + \text{Grinning Face with Big Eyes} + \text{Mouse} + \text{Thinking Face} =$$
- $$\text{Blue Face with Sweat Droplets} + \text{Crying Face} - \text{Woman with Open Mouth} + \text{Squirrel} =$$
- $$\text{Smiling Face with Smiling Eyes} + \text{Woman with Open Mouth} + \text{Grinning Face with Big Eyes} + \text{Squirrel} =$$
- $$\text{Crying Face} + \text{Thinking Face} - \text{Smiling Face with Smiling Eyes} + \text{Blue Face with Sweat Droplets} =$$
- $$\text{Smiling Face with Heart Eyes} + \text{Grinning Face with Big Eyes} + \text{Mouse} + \text{Thinking Face} =$$
- $$\text{Squirrel} + \text{Thinking Face} - \text{Blue Face with Sweat Droplets} + \text{Thinking Face} =$$

Answers on page 43.

## Police Bulletin

*A monthly newsletter from  
Philip Wilkinson, Police and Crime  
Commissioner for Wiltshire.*



The transformation of Wiltshire Police's service will continue after my budget was approved by the police and crime panel early in February.

This support will mean the police precept will rise by £14 a year, for a Band D property. It isn't a position I wanted but I was faced with £11m of savings if I didn't.

Even with the rise, £6.8m of savings need to be delivered by transformation of police service delivery. I can reassure you Wiltshire Police will always have protecting the public, increasing public access and visibility and Making Wiltshire Safer at fore of every decision.

It is a fact I am asking the Chief Constable to do ever more with less funding. I am asking her to improve the policing service, for more visible and effective policing but with less funding than the majority of Chief Constables.

Wiltshire Police is delivering – we have the most police officers in a decade, increased outcome rates, crime decreasing in some crime types year-on-year, and communities seeing more visible policing with improving 999 and 101 response times. This comes at a cost and is why I had to ask for the maximum increase.

Of course, the financial challenges mean there will be tough decisions but not at the cost of frontline policing or the service received. The Chief Constable and I have committed to protect police officer numbers and police stations with public access.

The Chief and I know there is more to do to make people feel safe and we will not stop ensuring Wiltshire Police is on that improvement journey and will lead the way as one of the most effective and efficient forces.



Sampson Coward  
SOLICITORS

with

Whitehead Vizard

Legal Excellence



→ Family → Employment → Property  
→ Litigation & Disputes → Commercial → Wills & Probate

St Mary's Chambers, 51 New Street, Salisbury, Wiltshire SP1 2PH

t: 01722 410664 e: [mail@sampsoncoward.co.uk](mailto:mail@sampsoncoward.co.uk)

[www.sampsoncoward.co.uk](http://www.sampsoncoward.co.uk)





Our expert Wills, Probate and Estate Planning department can advise and support you when it comes to protecting your family for the future.

**Will Writing**  
**Lasting Powers of Attorney**  
**Trusts**  
**Probate**  
**Estate Planning**  
**Inheritance Tax**

Contact the team today to find out how we can support you.

Because your family matters

45 Castle Street, Salisbury, SP1 3SS

01722 412000

[www.parkerbullen.com](http://www.parkerbullen.com)

**PARKER**  
**BULLEN**  
SOLICITORS

Parker Bullen LLP is authorised & regulated by the Solicitors Regulation Authority SRA number 535414



## BASED IN FOVANT

01722 714308  
07541 358570

- Local
- BPCA trained
- RSPH qualified
- Sensible pricing
- Fully insured
- Reliable
- Discreet
- Evening & weekends



[www.greystonespestcontrol.com](http://www.greystonespestcontrol.com)

[michael@greystonespestcontrol.com](mailto:michael@greystonespestcontrol.com)



# Lawn care to the highest possible standards

Get an INSTANT, no obligation quote by using our online lawn measuring tool in 3 easy steps:

visit [www.lawn-tech.co.uk](http://www.lawn-tech.co.uk)

- 1 Enter your postcode
- 2 Outline your lawn
- 3 Submit your details



## What makes Lawntech stand out from the crowd?

- 🌿 A track record of over 30 years experience, delivering consistent professionalism
- 🌿 Highly qualified and accomplished technicians with over 130 years of combined experience
- 🌿 Offering a sustainable approach to lawn care, using semi organic fertilisers. Fully organic treatment programme available

**FREEPHONE 08000 665 465**

Free to call - landlines and mobiles

[info@lawn-tech.co.uk](mailto:info@lawn-tech.co.uk)

[www.lawn-tech.co.uk](http://www.lawn-tech.co.uk)



**Lawntech™**

Wiltshire South

**bluebird**  
care®



## *Why* choose Bluebird Care?

We're here so your loved one can stay home, where they want to be. Where things are familiar. Where they feel at ease. Where they have the best chance to live a full and comfortable life.

Whether you're looking for everyday companionship or more complex care, our highly-trained Care Experts will help your loved ones live the life they want, where they want.

Because as everyone knows, it's good to *be home* and we provide you with premium home care enabling you to stay in the home you love.

**Home Care • Live-in Care • Complex Care**

*Call us for a friendly chat on 01722512989  
or email us: [wiltshiresouth@bluebirdcare.co.uk](mailto:wiltshiresouth@bluebirdcare.co.uk)*



# **Coombe Bissett Stores and Post Office**

**Homington Road**

**Coombe Bissett SP5 4LR**

**shop@coombebissettstores.co.uk**

**01722 718852**

**facebook.com/CoombeBissettStoresNew**

Open Monday to Friday 7:00am to 6:00pm

Saturday 7:00am to 1:00pm

closed Sunday and Bank Holidays

When the shop is open, so is the Post Office



## **FLAMSTONE LOGS**

### **Air & Kiln Dried Logs for Sale**

Various load sizes available

### **Tree Surgery Services**

NPTC Trained - Fully Insured - Public Liability

For further information or a free quotation

Please Contact

**John 07768 894043 or Henry 07807 892510**

## **S. WALLWORTH ELECTRICAL SERVICES LTD**

**FULLY QUALIFIED ELECTRICIAN, EMERGENCY REPAIRS**

**INSTALLATIONS – RE-WIRES, ELECTRICAL REPAIRS & TESTING**

**EXTRA SOCKETS & LIGHTING, NIGHT STORAGE HEATING, ELECTRIC SHOWERS**



**DOMESTIC & COMMERCIAL**

**FREE QUOTATIONS.**

**SIMON WALLWORTH**

**31 DEAN LANE, SIXPENNY HANDLEY**

**SALISBURY, WILTSHIRE**

**SP5 5PA**

**TEL: 01725 552545 MOB: 07826 928759**

**S.WALLWORTH@HOTMAIL.CO.UK**

# **SELF STORAGE FACILITY**

**Safe, secure & convenient**

**INDOOR UNITS & CONTAINERS**

**for domestic or business use**

**All sizes available**

**On the A354 near Sixpenny Handley**

**Phone David 07971 869372 or Steph 07748 925810**

**email: [info@dorsetandwiltsstorage.co.uk](mailto:info@dorsetandwiltsstorage.co.uk)**



**[www.dorsetandwiltsstorage.co.uk](http://www.dorsetandwiltsstorage.co.uk)**

## Valley Contracting Services



- 
- FENCING
  - CONCRETE BREAKING
  - SCRUB CLEARANCE
  - MINOR EXCAVATIONS
  - DITCH/CULVERT CLEARANCE
  - MINOR DRAINAGE
- 

Fully Insured - Public Liability  
Free Quotations

Please contact Chris: Mobile: 07707 151234  
Email: [valscape712@yahoo.com](mailto:valscape712@yahoo.com)

# HIGH SPEC WINDOW CLEANING

Other Cleaning Services Include:

- Gutters
- Driveways
- Conservatories
- Greenhouses
- Solar Panels
- Fascias
- Patios
- Walls
- Cladding
- Paths

T: 01425 650894 M: 07879 426914

[www.hs-cleaning.co.uk](http://www.hs-cleaning.co.uk)



# BURROW



**Septic Tank Owners: register your interest in a fully-funded upgrade to a treatment plant.**

Due to the Phosphate pollution in your local river catchment we are operating a septic tank replacement scheme using private funding.

We install wastewater treatment plants that remove almost all pollutants, with funding secured from planning applicants who need to create a positive impact on the environment.

**Register on our website today.**

**[burrow-environmental.com](http://burrow-environmental.com) 01935 507 508**



## Spinal flow technique

helps with:

1.

Stress  
Anxiety  
Depression  
Migraines  
Tinnitus  
Vertigo  
Sinuses  
Asthma

2.

Sleep disorder  
Digestive, reproductive issues  
Thyroid issues  
High, low blood pressure  
Sciatica

3.

Scoliosis  
Disc problems  
Kidney and bladder issues  
Fibromyalgia  
Chronic fatigue syndrom  
MS  
Brain fog  
Parkinson disease

**Spinal Flow®Technique** is a fast, effective way to heal from pain, disease and illness. Using access points on the sacrum and cranium, your body is able to release 3 types of stress blockages: physical, emotional and chemical. It is gentle and creates change in the body using it's own innate intelligence to heal.

For more information please call Katarina on: 07759 961 498  
or email: [kbspinalflow@gmail.com](mailto:kbspinalflow@gmail.com)

**FREE posture and gateway  
assessment**



GRAYS STONE CARVING  
STUDIO



**BESPOKE MEMORIALS & INSCRIPTIONS**

**Creating memorials of celebration  
and commemoration**

Individually designed, hand drawn and carved,  
using traditional hand tools and techniques.  
Made in collaboration with you.

Unit 2, Knowle Farm, Bowerchalke, Salisbury SP5 5BP  
www.grays-stone-carving.co.uk  
Henry M: 07766 464048 Tam M: 07919 258708

**Kevin Knight  
Clock & Watch Repairs**

Free estimates given  
Over 30 years experience

**Tel 01722 331969**

**Mob 07900 928451**

**Email:**

**kevindavidknight@gmail.com**

Comfortable and cosy self-contained accommodation.

**Little Bridge Studio**

**Bishopstone**

Sleeps 3 plus cot.

Large open planned living space with wood burning stove.

Shower room and separate bathroom.

Contact: Alice Lyons – 07811455756

**Charlotte Steel (Dip. Couns. MBACP)**

**Qualified Counsellor and Complementary Therapist**

The Chapel, Church Street, Bowerchalke, SP5 5AY

07811 944328, cjsteel92@gmail.com, www.charlottesteel.org

**Counselling: £50** please see [www.bacp.co.uk](http://www.bacp.co.uk) for more info.

**Hot Stone Massage:** Full Body (90 minutes) £65, Back (1 hour) £50

**Massage:** Full Body (90 mins) £60, Back (1 hour) £45

**Reflexology:** Initial Consultation £38, Further Treatments £35

*Peaceful therapy room with plenty of parking*

***Gift Vouchers Available***

Is it time to rethink your garden?

- Professionally designed gardens
- Full or partial redesigns
- Planting design
- Garden advice and consultancy
- Increase your property's value



Eleanor Osborne  
GARDEN DESIGN

eleanorobornegardendesign.com  
[eggardendesign@gmail.com](mailto:eggardendesign@gmail.com) 07732 003557  
Chalke Valley, Wiltshire

## Local raw Honey for Sale



Set honey from the oil seed rape in  
May and soft set honey from  
Summer extraction

£7 1lb jar

£4 1/2lb jar

Bridge House

The Alley

Bishopstone

[local.honey@francesstimpson.co.uk](mailto:local.honey@francesstimpson.co.uk)



Frankie

My honey is not heated or very fine  
filtered so retains pollens and other  
nutrients

# VALENTINE SIGNS For SIGNWRITING & GILDING SALISBURY

• Aaron Stephens •

• SIGNWRITING • BRILLIANT CUT GLASS • GILDING •

• 07708 820 841 • [aaron@valentinesigns.co.uk](mailto:aaron@valentinesigns.co.uk) •

Follow me on Instagram @aaronvalentinestephens

• VALENTINESIGNS.CO.UK •

## Tim Saunders Plumbing & Tiling Services

Complete Kitchens, Bathrooms & Wet rooms  
Tanks, Cylinders, Pumps, Valves & Radiators  
Taps, Basins, & Toilets  
Unvented hot water system installation, repair  
& servicing (G3 certificated)  
Stuart Turner approved installer  
Disabled/assisted living zero vat  
installations/conversions  
Wall & floor tiling  
Free advice and estimates  
Emergency repairs. No call out fees  
Fully insured

**07772 610190**

Email: [timsaundersps@gmail.com](mailto:timsaundersps@gmail.com)





**Felix Campbell Tree & Grounds Maintenance**  
 TREE SERVICES STRIMMING  
 HEDGE CUTTING BRUSH CLEARANCE  
 CHIPPING LOGS

**07472 402500**

**felixcampbell124@gmail.com**



NAOMI OOSTHUIZEN

**LETTING  
CLUTTER  
GO**

Professional Declutterer and Organiser

Services Included:  
 Declutter & Organise  
 the Home  
 Sorting Paperwork  
 Finding the Garden &  
 Outbuildings

Are things growing out of  
 control?  
 Would you like to feel  
 happier in your own home?  
 If you are feeling overwhelmed  
 at home from your belongings,  
 whether from a normal  
 busy life, a family crisis  
 like a loss of someone  
 close or a relationship  
 separation to moving house,  
 I can help you find your  
 way through it.

[www.lettingcluttergo.co.uk](http://www.lettingcluttergo.co.uk)  
 07900795158  
[naomi@lettingcluttergo.co.uk](mailto:naomi@lettingcluttergo.co.uk)

Fully insured, DBS checked, and  
 member of APDO ([www.apdo.co.uk](http://www.apdo.co.uk))



For all your pest issues, Local, fully insured, fully qualified BPCA Member  
 Wasps, Rats, Mice, Cluster fly, Clothes Moth, Fleas, Squirrels, Bed bugs  
 Call now- **07711 259749** Email- **info@wiltshirepestservices.co.uk**



**Ben Ridgers-steer**  
**Oil Boiler Servicing**  
**and Repairs**



**07534 262633**  
**Ben\_r\_s@hotmail.com**

## LITTLE BANKSIDE

[www.littlebankside.co.uk](http://www.littlebankside.co.uk)

Do you need extra space for visiting family & friends?  
Self contained studio holiday let for 2 in Bishopstone.

Contact:  
Hilary King  
[littlebankside@gmail.com](mailto:littlebankside@gmail.com)  
01722 780017

### PODDINGTON COTTAGE

A newly refurbished one-bedroom detached annex in Bishopstone available for short Holiday Let. Well behaved dogs are welcome - maximum of 2 dogs. Fully fitted kitchen, parking for 2 cars, lounge with smart tv, Wi-Fi, dining area and shower room.

For more information, please contact Sandra on 07939626155 or email:

[poddingtoncottage@btinternet.com](mailto:poddingtoncottage@btinternet.com)

A warm welcome awaits.

## Matthew Veale

Mobile Hairdresser Available 6 days per week

Reliable friendly service London Toni & Guy trained

Please call 01722 336821 or 07788 686829



# Your local property expert

[w-w.co.uk](http://w-w.co.uk)





## METAL ARTWORK

# BLACKSMITHS & GENERAL ENGINEERS

01722 781212

[www.metal-artwork.co.uk](http://www.metal-artwork.co.uk)



## Pregnant?

Looking for evidenced-based childbirth education?  
Considering having an extra birth partner?

### A doula can...

- Stay with you throughout labour and birth to help you achieve your specific choices
- Offer 1:1 breastfeeding and general feeding support
- Provide help at home for those first few days and weeks after birth

Doula Cally Edwards offers emotional and physical support to help you truly enjoy your pregnancy, birth and early days with your new baby



[www.callyedwards.com](http://www.callyedwards.com)

   @doulacally



## Empowering Your Health with Simple, Sustainable Nutrition

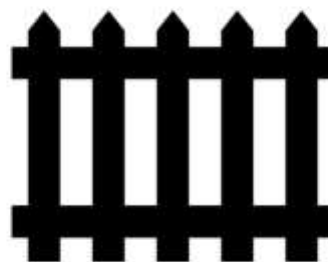
I provide personalised nutrition advice to support weight loss, boost energy, balance blood sugar, improve gut health and promote lasting well-being

T: +44 (0) 7435 520 772

E: [amber@ambercotton.co.uk](mailto:amber@ambercotton.co.uk)

Web: [www.ambercotton.co.uk](http://www.ambercotton.co.uk)

## Ebble Fencing



- **Bespoke Fences and Gates**
- **Professional Service**
- **20+ Years Experience**
- **Fully Insured**
- **Free Quotations**

07789 707959

[www.ebblefencing.com](http://www.ebblefencing.com)

# evolve

TREE SERVICES

call Stuart Larter for a free quote

**07563 645043**  
**01747 871753**



Tree Specialist,  
Fully Qualified and Insured

[www.evolveetree.co.uk](http://www.evolveetree.co.uk)



## Boiler Servicing & Maintenance

- Breakdowns - Repairs - Oil - Gas  
- LPG -

Mark Benfield

01747 828689 or 07974 249287

[mark@mabheatingservices.co.uk](mailto:mark@mabheatingservices.co.uk)

## Jennie Gilbert – Pottery

Handmade Stoneware pots for the home  
Perfect presents for you or your friends  
Beginners Pottery courses (2 day),  
tokens available

4 St. Martin's Workshops, Manor Farm,  
Fifield Bavant,  
Broad Chalke, Salisbury SP5 5HT  
01722 780402  
[jennie.gilbert@yahoo.co.uk](mailto:jennie.gilbert@yahoo.co.uk)



[www.jenniegilbert.com](http://www.jenniegilbert.com)

## Jayne Lucas Hairdressing



I cover all aspects of  
hairdressing for adults  
and children in a lovely  
relaxed salon setting  
near Coombe Bissett  
with easy *free* parking.

For enquiries & bookings please call:-

**07771 625161**



## 2024 Advertising rates – based on A5 page

Our magazine is a source of information for all households in the parish and is used by residents as a handy directory of local news, events and services. It is delivered free to over 300 households, and also viewable online at <https://www.bishopstone-salisbury.co.uk/parish-magazine-stab>. It is published in 10 x monthly editions with combined editions for Aug/Sep & Dec/Jan.

Prices below are per annum in bold. There is a significant discount for advertisers who choose to pay for all ten editions in advance.

<b>Full page (A5)</b>  13x19cm  <b>£120 per annum</b>	<b>Half page</b>  13x9.5cm  <b>£75 per annum</b>	<b>Quarter page</b> <b>Portrait</b> 6.5x9.5cm  <b>£40 per annum</b>	<b>Quarter page</b> <b>Landscape 13x5cm</b>  <b>£40 per annum</b>
---	--	---	--

One off/occasional advertisements will cost slightly more per issue as follows:

<i>Full Page: £15.00 per issue</i>	<i>Half Page: £9.00 per issue</i>	<i>Quarter Page: £5.00 per issue</i>
------------------------------------	-----------------------------------	--------------------------------------

### How to place your ad in STaB

1. Make a .pdf, .jpeg, or Word file of your ad, making sure it is the correct size for publication (see table of sizes and prices above) and that it will reproduce well in black and white. We cannot design or make advertisements for you.
2. E-mail the file to Rob Pendleton (stabads@outlook.com), stating which of the above sizes you would like.
3. The deadline for publication is the 20th of each month. Please send ad as early as possible as the e-mails will not be checked daily. If you do not send a new ad by this date, we will use the most up to date version we have.
4. When you have placed your order, you will receive an invoice with details of payment by cheque or bank transfer. Please pay within 14 days and make sure you include your reference number and business name. Donations are also always welcome.
5. The Editor reserves the right to edit all contributions.

### How to pay:

Cheques: Please write your <u>invoice number</u> on the back	Bank transfer: Please use <u>your name &amp; invoice number</u> for reference
Payable to: Bishopstone Parochial Church Council Send to: The Treasurer, Ebble Cottage, Mill Lane, Bishopstone, SP5 4BG	Bank: Lloyds TSB Sort Code: 30-97-41 Account Number: 00665145 Account Name: PCC Bishopstone Church

Terms – payment within 14 days

Queries:

Rob Pendleton, STaB Advertising: Email: [stabads@outlook.com](mailto:stabads@outlook.com)

## BISHOPSTONE PARISH COUNCIL

Councillors	Telephone
Ali Thorne (Chairman)	07768 514133
Piers Edwards (Vice Chairman)	01722 780079
Norman Barter	01722 780471
Anita Smith	01722 781213
Michelle Tatner	07968 842525
Simon Williams	01722 780905
Nicky Rigg	07786 806914
Parish Clerk	
Mike Ash Lower Thatch Flamstone Street Bishopstone SP5 4BZ	01722 781044 bishopstoneclerk@btinternet.com
Further information is on the village website: <a href="http://www.bishopstone-salisbury.co.uk">www.bishopstone-salisbury.co.uk</a>	

## THE VILLAGE HALL COMMITTEE MEMBERS

Chairman - Norman Barter	780471
Treasurer - Francis Taylor	780316
Secretary - Sue Grantham	07873 596310
Entertainments - Sue Taylor	780316
Event bookings - Caroline Ash	781044
Hall bookings - Margaret Barter	780471
Hall maintenance - Nigel Peasley	07761 463737
Member - Andy Stocker	780956
Member - Kathy Hales	07940 659644

*The Village Hall is an important resource and offers a venue for a wide variety of events for the benefit of all. The Hall is supported by a large group of dedicated local people in addition to the Committee. We hope you will support events whenever you can and if you would like to join the wider group of Friends of the Village Hall then please contact any member of the committee.*

FLOOD WARDENS	
West - Nigel Peasley	07761 463737
East - Michael Pratt	07798 607742
Emergency Planning - Piers Edwards	07920 475009



# Letters to the Editor

Letters to STaB are very welcome, but the views expressed may not be those of the editorial team or the Parish Church Council.

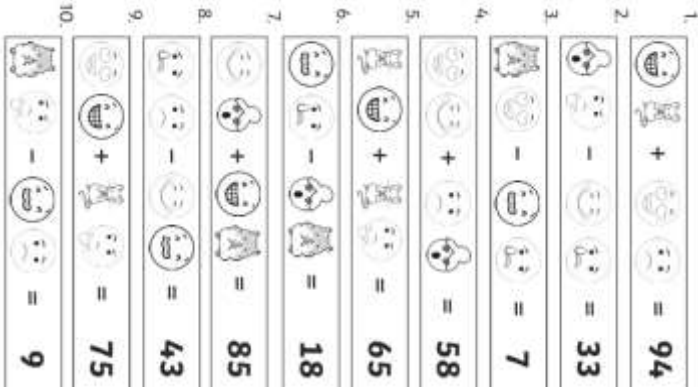
## BROAD CHALKE PARISH COUNCIL INVITATION FOR EXPRESSIONS OF INTEREST

### GRASS CUTTING AND RELATED GROUNDS MAINTENANCE WORKS

Broad Chalke Parish Council, is inviting suitably qualified, experienced, and resourced contractors to be considered to undertake the above and similar work.

Any interested party should in the first instance request a copy of the Specification to: [clerkbroadchalke@gmail.com](mailto:clerkbroadchalke@gmail.com)

For and on behalf of Broad Chalke Parish Council



### STaB Selling Spot

STaB Selling Spot posts are free of charge for those who live in the Parish. Let us know if you have anything to sell!

### Bishopstone Village Website

[www.bishopstone-salisbury.co.uk](http://www.bishopstone-salisbury.co.uk)

The village website carries a wealth of information about Bishopstone. There are pages devoted to the church, the Parish Council, what's on at the Village Hall, meetings, clubs, local organisations and village walks. There are even digital copies of this magazine.

If you want to have any information included on the website please contact either

Mike Ash ([bishopstoneclerk@btinternet.com](mailto:bishopstoneclerk@btinternet.com))

Or Roger Stockton ([rogerstockton@icloud.com](mailto:rogerstockton@icloud.com))



## Services in Chalke Valley Benefice – March 2025

BCP = Book of Common Prayer (Traditional Language), CW = Common Worship (Contemporary Language)



<b>2 March Sunday Next before Lent</b>	9.30am Family Communion (CW) 9.30am Parish Communion (CW) 9.30am Holy Communion (BCP) 11.00am Morning Prayer (BCP) 11.00am Parish Communion (CW) 11.00am Family Service	Broad Chalke Britford Berwick St John Ebbesbourne Wake Coombe Bissett Odstock	Ruth H-S Jenny Taylor Alison Waterhouse Biddy Trahair Jenny Taylor Adrian Taylor
<b>5 March ASH WEDNESDAY</b>	9.30am School Communion with Ashing (in Church for all) 6.00pm Communion with Ashing 6.00pm Communion with Ashing	Coombe Bissett  Bowerchalke Coombe Bissett	Jenny Taylor  Kate Woolven Jenny Taylor
<b>9 March 1<sup>st</sup> Sunday of Lent</b>	9.30am Parish Communion (CW) 9.30am Family Communion (CW) 10.30am Worship Together 11.00am Morning Prayer (BCP) 11.00am Parish Communion (CW) 11.00am All Age Service 3.00pm Evening Prayer	Bowerchalke Nunton Broad Chalke Hub Charlton All Saints Homington Alvediston Fifield Bavant	Ruth H-S Jenny Taylor Lay Led Rhoddy Voremberg Alison Waterhouse Biddy Trahair Biddy Trahair
<b>16 March 2<sup>nd</sup> Sunday of Lent</b>	9.30am Holy Communion (BCP) 9.30am Parish Communion (CW) 9.30am Parish Communion (CW) 11.00am Family Communion (CW) 11.00am Parish Communion (CW) 11.00am Parish Communion (CW)	Bowerchalke Bishopstone Odstock Ebbesbourne Wake Coombe Bissett Berwick St John	Alison Waterhouse Jenny Taylor Maggie Metcalfe Kate Woolven Maggie Metcalfe Ruth H-S
<b>23 March 3<sup>rd</sup> Sunday of Lent</b>	9.30am Parish Communion (CW) 9.30am Parish Communion (CW) 11.00am Family Service 11.00am Parish Communion + APCM 11.00am Holy Communion (BCP) 11.00am Morning Prayer (BCP) 11.00am Morning Prayer (BCP)	Charlton All Saints Broad Chalke Nunton Bishopstone Alvediston Homington Berwick St John	Ruth H-S Alison Waterhouse Adrian Taylor Jenny Taylor Alison Waterhouse Rhoddy Voremberg Lay Led
<b>30 March MOTHERING SUNDAY <i>Clocks go Forward</i></b>	10.00am Benefice Communion (CW) 10.00am Benefice Communion (CW)	Broad Chalke Charlton All Saints	Alison Wayerhouse Ruth H-S
<b>6 April 5<sup>th</sup> Sunday of Lent</b>	9.30am Family Communion (CW) 9.30am Parish Communion (CW) 9.30am Holy Communion (BCP) 11.00am Morning Prayer (BCP) 11.00am Parish Communion (CW) 11.00am Family Service 11.00am Morning Service	Broad Chalke Britford Berwick St John Ebbesbourne Wake Coombe Bissett Odstock Bishopstone	Ruth H-S Jenny Taylor Alison Waterhouse Biddy Trahair Ruth H-S Adrian Taylor Sally Leaver

**Ministry Team:** Team Rector ~ The Revd Dr Ruth Howlett-Shipley: 01722 697022  
 Team Vicars ~ The Revd Canon Jenny Taylor: 01722 503081, The Revd Alison Waterhouse: 07904 034221  
 Associate Priests ~ The Revd Maggie Metcalfe: 01722 325825, The Revd Kate Woolven: 07754 582395  
 Team Administrator ~ Mrs Emily Broomhead: 07890 262376

Assisting Clergy: The Revd Canon Anthony Hawley: 01794 390607, The Revd Canon Tony Monds: 07808 614597

Lay Worship Leaders: Angela Bridges: 01747 828383, Yvonne & Kevin Follett: 01747 828785, Caroline Lamb: 01722 780789,  
 Sally Leaver: 01722 780447, Don Morgan: 01722 718557, Adrian Taylor: 01722 325862, Janet Roe: 01725 519242,  
 Biddy Trahair: 01722 780666, Rhoddy Voremberg: 07785 304142, James Wardroper: 01722 718152

If there are any problems with the delivery of STaB please contact Sue Porter on [porter1totalserve@gmail.com](mailto:porter1totalserve@gmail.com) or 01722 780459.